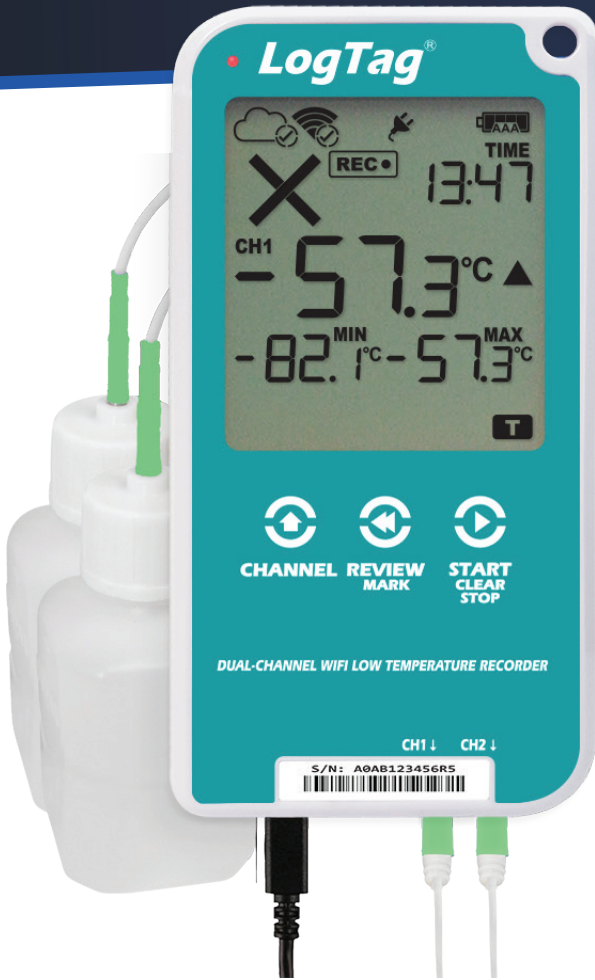


YOUR DATA, ANYWHERE, ANYTIME



**LogTag**®

**UTREL30-WiFi**  
30 Day WiFi Dual-Channel  
Low Temperature Logger

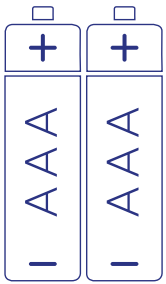


The LogTag® UTREL30-WiFi temperature data logger automatically uploads real-time temperature data to your LogTag® Online cloud account via your existing wireless network.

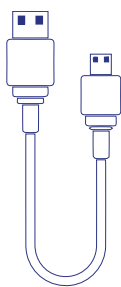
It features a large, easy-to-read display, along with many familiar attributes known from the LogTag® family of data loggers.

These include non-volatile memory that holds up to 32,000 temperature readings, or 16,000 readings per channel. A statistical memory storing maximum and minimum readings and alarm durations for each of the last 30 days.

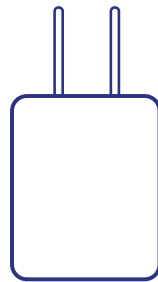
# Accessories



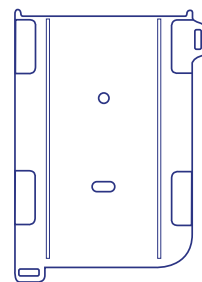
**2x AAA Batteries**  
Not Included



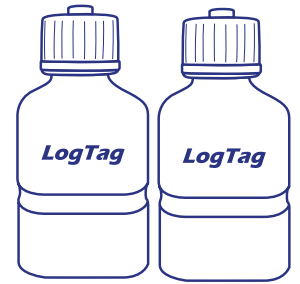
**USB Cable**  
Included



**AC Adapter<sup>^</sup>**  
Included



**Wall Mount**  
Not Included



**Buffer assembly**  
Not Included  
(Silica sand recommended for temperatures below -40°C)



**Socket Cover\***  
Included (Optional to use)



**External Probe**  
Not Included (Required).

*Compatible probes below:*

<b>ST10S</b>	22mm tip length, ø5mm (Not recommended for use with buffer)
<b>ST10M</b>	65mm tip length, ø5mm.
<b>STX50</b>	5 Meter extension cable for ST10/ST100 sensors.

*ST10S Probes are available with a 0.5m, 1.5m or 3m cable  
ST10M Probes are available with a 1.5m or 3m cable  
E.g. ST10M-15 for 1.5m or ST10M-30 for 3m cable*

<sup>^</sup>US and EU adapter only

# Features



Real-time data automatically uploaded via WiFi to the LogTag Online cloud.



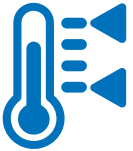
Download data via LogTag Analyzer or as a PDF (no software required) when Wi-Fi is unavailable.



Configure Wi-Fi settings using LogTag Mobile application and Bluetooth®.



Check and reset Min-Max temperature reading at any time.



Read current temperature and latest Min-Max temperature at a glance.



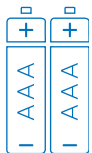
View alarm status for up to 30 days at a glance.



Audible alarm and flashing red LED signals a temperature alarm.



Measure and store up to 16,000 readings for each channel – enough for 67 days at 6 minute logging.



Can be powered by 2x AAA batteries (user replaceable) if external power is lost.



Second battery backup via a coin cell to ensure no data is lost.



Auto-pause function suspends alarm & statistic processing when the external probe is unplugged.



Two socket external probe with auto channel swap function.



# Applications



Vaccine & Pharmaceuticals



Industrial



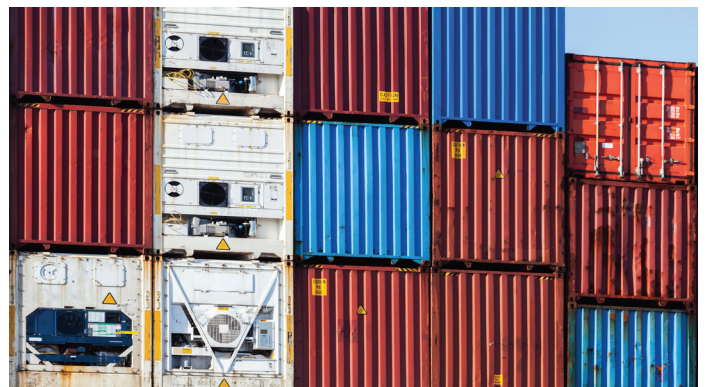
Cold Storage



Clinic



Transportation



Refrigerated Containers

# Specifications

<b>Product Model</b>	UTREL30-WiFi.
<b>Sensor Measurement Range</b>	-90°C to +40°C (-130°F to +104°F).
<b>Operating Temperature Range</b>	-30°C to +60°C (-22°F to +140°F).
<b>Storage Temperature Range</b>	10°C to +40°C (32°F to +104°F).
<b>Rated Temperature Reading Resolution</b>	0.1°C (0.2°F) for measurements -80°C to 10°C (-112°F to 50°F) 0.2°C (0.4°F) for measurements 10°C to 20°C (50°F to 68°F) and -90°C to -80°C (-130°F to -112°F) 0.3°C (0.5°F) for measurements 20°C to 30°C (68°F to 86°F) 0.5°C (0.9°F) for measurements 30°C to 40°C (86°F to 104°F) LogTag Analyzer currently displays to one decimal place of °C or °F. The native resolution is what is stored in the LogTag®.
<b>Rated Temperature Reading Accuracy</b>	Better than ±0.5°C for -20°C to +10°C (-4°F to 50°F) Better than ±0.7°C for -50°C to -20°C (-58°F to -4°F) and +10°C to +30°C (50°F to 86°F) Better than ±1°C for -80°C to -50°C (-112°F to -58°F) and +30°C to +40°C (86°F to 104°F) Better than ±1.8°C for -90°C to -80°C (-130°F to -112°F)
<b>Probe Connectivity</b>	Up to 2
<b>Probe Compatibility</b>	All ST100 precision thermistor external probes can be interchangeably connected to the UTREL30-WiFi. Please refer to the page for External Probes on the LogTag North America website.
<b>Recording Capacity</b>	16,129 temperature readings. 67 days at 6 minute logging. Day summary statistics memory (for display on LCD): up to 30 days of Min/Max/duration and alarm trigger statistics.
<b>Sensor Reaction Time</b>	Typically less than 2 minutes(T90) in moving air (1m/s) for ST10S type.
<b>Sampling Interval</b>	Configurable from 30 seconds to 18 hours.
<b>Logging Start Options</b>	Push button start (with configurable start delay from 1 minute to 72 hours) or specific date & time.
<b>Download Time</b>	Typically with full memory (16,129 readings) in less than 10 seconds.
<b>Environmental</b>	IP51 (when vertically mounted or hung with USB dust-cap in place).
<b>Calibration</b>	Factory calibrated using NIST equivalent reference equipment. Calibration certificate available on request.
<b>Power Source</b>	5V via micro USB socket or, 2 x 1.5V AAA batteries. CR2032 LiMnO <sub>2</sub> coin cell (backup logging function only).
<b>Battery Life</b>	Device should normally be powered via USB. AAA batteries provide backup power for up to 2 months.
<b>Connection Interface</b>	USB 2.0 / Micro-USB plug.
<b>WiFi</b>	802.11 b/g/n
<b>WiFi Authentication Methods</b>	Open, WPA2/PSK (with or without PMF), EAP-PEAP, EAP-TTLS
<b>Bluetooth®</b>	Bluetooth® V4.2 BR/EDR and Bluetooth LE®
<b>Size</b>	141mm(H) x 72mm(W) x 18mm(T).
<b>Weight</b>	158g with AAA batteries, (134g - excluding probe and AAA batteries).
<b>Case Material</b>	Polycarbonate

The Bluetooth® word mark and logos are registered trademarks owned by Bluetooth SIG, Inc. and any use of such marks by LogTag North America Inc. is under license. Other trademarks and trade names are those of their respective owners.

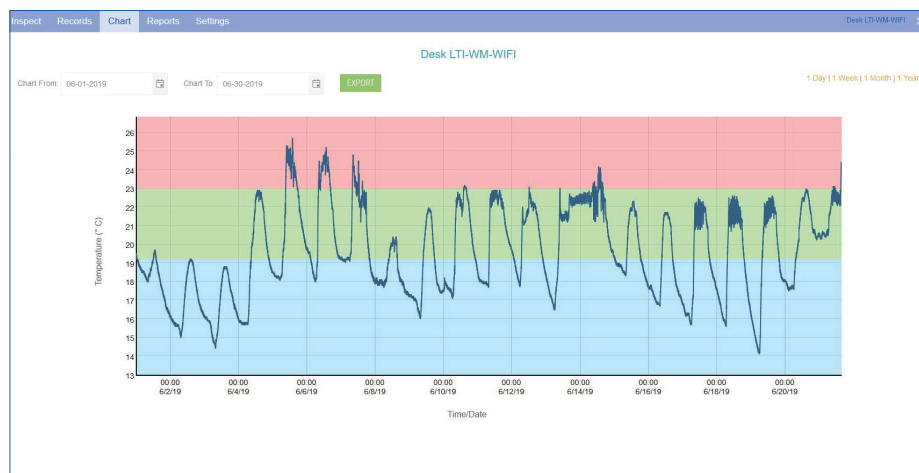


# Connection Software

Real-time data automatically uploaded via WiFi to the LogTag Online cloud.

For more information on LogTag Online, please visit our website:

[logtagrecorders.com/online](http://logtagrecorders.com/online)



Revision K (080323) © Copyright 2023, LogTag North America Inc. All rights reserved.

LogTag® is a registered trademark of LogTag North America Inc. LogTag North America Inc. reserves the right to change this specification without notice.