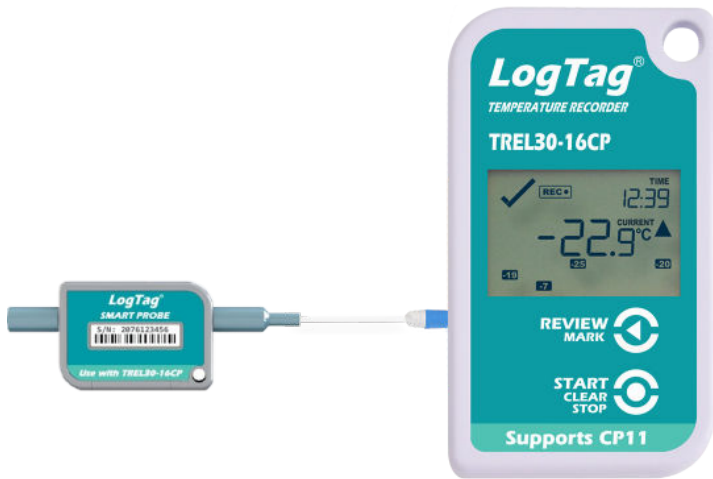


CALIBRATABLE REPLACEABLE SMART PROBE



Low Temperature
Smart Probe
CP10/CP11

LogTag[®]



The LogTag® CP10 & CP11 is a precise and reliable probe that can be swapped out and calibrated separately from the logger.

This probe can be inserted into a compatible logger without having to return or relocate the logger. Once the probe calibration period ends, the plug-and-play hot-swappable design allows users to interchange the probe easily. The expired probe can be sent to a calibration lab for re-calibration to ensure continuous logging without any interruptions.

The CP10 Smart Probe is compatible with the UTREL30-16 Dual-Channel logger and the UTREL30-WiFi Dual-Channel logger.

The CP11 Smart Probe is compatible with the TREL30-16CP logger.

Features



Plug-and-play hot-swappable calibratable probe without the need to take or remove the loggers from current locations.



Calibratable probe without the need to take or remove the loggers from current locations.



Battery life of 3-years.



High quality gold plated MCX connector.

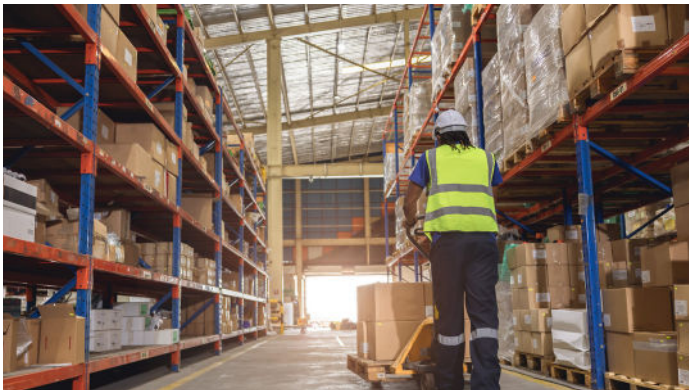
Applications



Laboratories



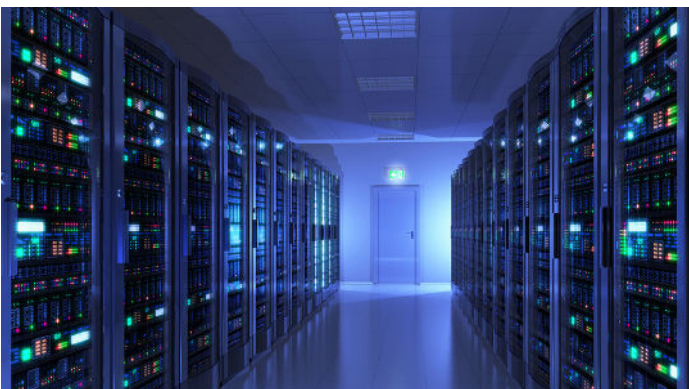
Pharmaceutical & Vaccine



Warehouse



Cold Room



Server Room



Clinics

Specifications

Product Model	CP10/CP11
Logger Compatibility	CP10: UTREL30-WIFI Dual-Channel Version UTREL30-16 Dual-Channel Version UTRED30-16 Single-Channel Version CP11: TREL30-16CP
Temperature Measurement Range	-90°C to +40°C (-130°F to +104°F).
Temperature Operating Range, Probe End	-90°C to +40°C (-130°F to +104°F).
Temperature Operating Range, Signal Conditioning End	-30°C to +60°C (-22°F to +140°F).
Rated Temperature Reading Accuracy	Better than $\pm 0.5^{\circ}\text{C}$ for -20°C to $+10^{\circ}\text{C}$ (-4°F to 50°F). Better than $\pm 0.7^{\circ}\text{C}$ for -50°C to -20°C (-58°F to -4°F) and $+10^{\circ}\text{C}$ to $+30^{\circ}\text{C}$ (50°F to 86°F). Better than $\pm 1^{\circ}\text{C}$ for -80°C to -50°C (-112°F to -58°F) and $+30^{\circ}\text{C}$ to $+40^{\circ}\text{C}$ (86°F to 104°F). Better than $\pm 1.8^{\circ}\text{C}$ for -90°C to -80°C (-130°F to -112°F). Actual performance is typically much better than the rated values. Accuracy figures can be improved by recalibration.
Temperature Resolution	0.1°C (0.2°F) for measurements -80°C to 0°C (-112°F to 32°F). 0.2°C (0.4°F) for measurements 0°C to 18°C (32°F to 64.4°F) and -90°C to -80°C (-130°F to -112°F). 0.3°C (0.5°F) for measurements 18°C to 30°C (64.4°F to 86°F). 0.5°C (0.9°F) for measurements 30°C to 40°C (86°F to 104°F). LogTag Analyzer® currently displays to one decimal place of °C or °F. The native resolution is what is stored in the LogTag®.
Acquisition Interval	Determined by logger, shortest acquisition interval 30 seconds
Sensor Reaction Time	Based on tip, same as for current probes
Environmental	Probe tip: IP68 Probe tip/cable junction: IP64 Signal conditioning: IP44
Power Source	CR2032 3V LiMnO2 Battery (distributor-replaceable)
Connection Interface	1-wire digital interface to compatible loggers
Battery Life	1 year storage, followed by 3 years of normal use (based on 5 minute logging).
Weight	34g
Signal Conditioning Case Material	Polycarbonate
Tip Material	Stainless Steel 316
Cable Material	PTFE

