

Network Base Station

RTR-500NW/AW Features and Specs

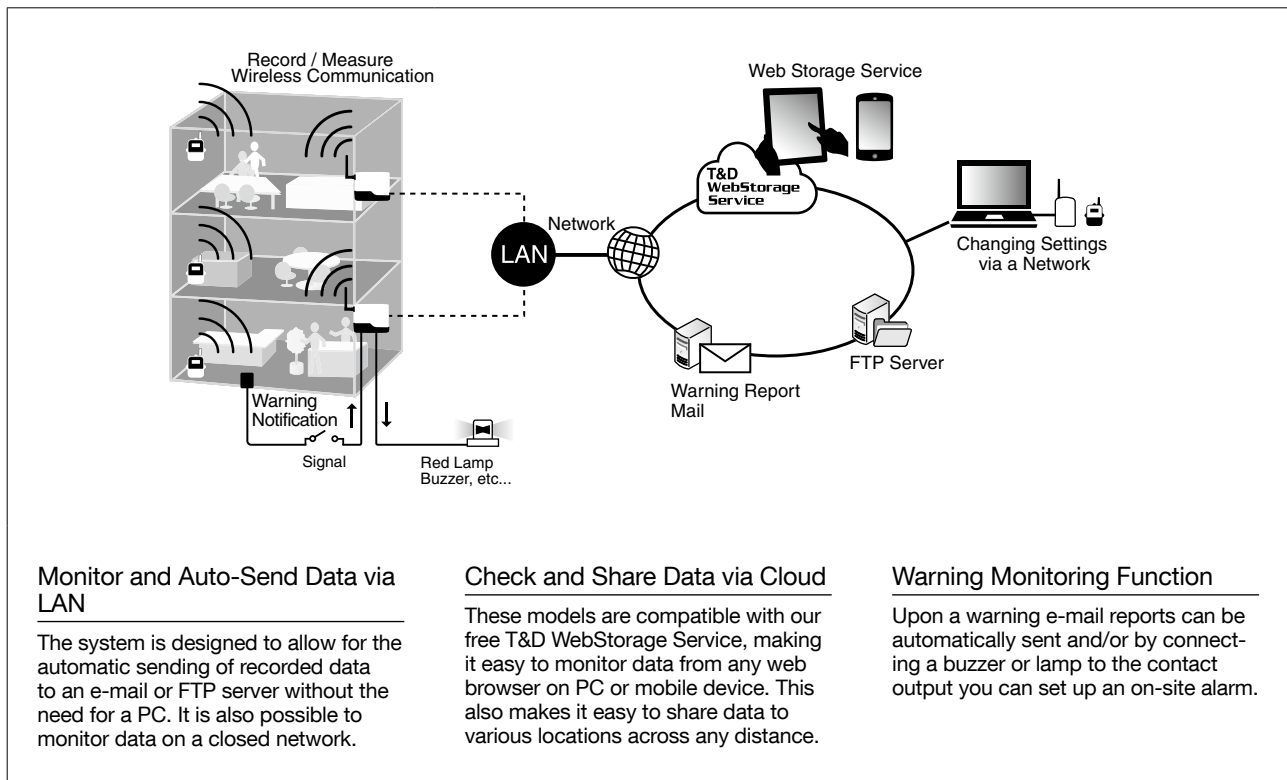
Data Transfer
Wireless LAN (500AW)
Wired LAN (500NW)

Data Monitoring
T&D Cloud Service,
Internet / Intranet

Warning Monitoring
Set Limit Exceeded /
Sensor Error /
Contact Input ON etc...

Warning Notification
E-mail / External
Contact Output

These models are network compatible base station with built-in wireless/wired LAN communication capabilities. Select from the RTR-500NW for a wired LAN and the RTR-500AW for a wireless LAN connection. They collect data from nearby data loggers via wireless radio communication and then automatically send it via LAN to the set FTP server or e-mail. It is also compatible with T&D WebStorage Service making it easy to collect data and monitor readings without having to setup your own recipient server.



Extension Possible for Wireless Communication

The communication range between logger and base is about 150 meters (500 ft), but this can be easily extended by adding a repeater unit.

Various Warning Settings

Warning Monitoring settings can be made for upper and lower limits, sensor error, logger battery level, communication error, and contact input.

Register up to 100 Data Loggers

It is possible to manage up to 100 separate data loggers (remote units) from one RTR-500NW/AW. And for easy management you can create up to 10 groups and up to 10 repeaters can be added to each group.

* For RTR-574 and RTR-576, registration of one unit will be counted as two units.

Add Remote Units and Change Settings via the Network

If, after having made initial settings, you wish to add a new Remote Unit or change the registration info of a Remote Unit, it can be done easily over the network.

* RTR-500 must be purchased separately.

Communication DLL specs for the RTR-500 Series, as well as, file formats for Current Readings Files and Recorded Data Files (XML) are available free of charge to our customers. With these it is possible to develop and create your own applications and systems.

RTR-500NW / 500AW Specifications

RTR-500NW / 500AW	
Compatible Devices	Remote Units: RTR-501 / 502 / 503 / 507 / 574 / 576 / 505-TC / 505-Pt / 505-V / 505-mA / 505-P (Including L Type and H Type), RTR-601-110 / 130 / E10 / E30 (RTR-601 Series is available for US only.) Repeater: RTR-500
Maximum Number of Registrations	Remote Units: 100 units (*1) Repeaters: 10 units x 10 groups
Communication Interfaces	Between Base Unit(s) - (Repeaters) - Remote Unit(s) - Wireless Communication (short range radio communication) US : FCC Part15 Section247 / IC RSS-210 (Frequency Range: 902 to 928MHz, RF Power: 7 mW) EU : ETSI EN 300 220 (Frequency Range: 869.7 to 870MHz, RF Power: 5 mW) - Optical Communication (proprietary protocol) With compatible Remote Units except RTR-574, RTR-576, and RTR-601 series Between Base Unit - PC - RTR-500NW: Wired LAN RJ45 Connector 100 Base-TX / 10 Base-T AutoMDI / MDI-X - RTR-500AW: Wireless LAN Internal wireless LAN antenna, IEEE 802.11b / g WEP(64bit/128bit) / WPA-PSK(TKIP) / WPA2-PSK(AES) - USB Communication (For Setup)
Wireless Transmission Range	Approx. 150 meters (500 ft) if direct and unobstructed
Communication Time	Data Download Time from RTR-500 Series Remote Unit (for 16,000 readings) - Via wireless communication: About 2 min. The same amount of time will be necessary for each Repeater.
Communications Protocol	SMTP (POP before SMTP, SMTP-AUTH (LOGIN)), FTP, SNTP, DHCP, DNS
Power	AC Adaptor (AD-06A1 or AD-06C1)
Dimensions	H 83 mm x W 102 mm x D 28 mm (excluding antenna), Antenna Length: 87.3 mm
Weight	Approx. 120 g
Operating Environment	Temperature: -10 to 60 °C Humidity: 90 %RH or less (no condensation)
Accessories	Antenna, USB Mini-B Cable (US-15C), LAN Cable (LN-20W, only for RTR-500NW), AC Adaptor (AD-06A1 or AD-06C1), Software (CD-ROM), Manual (Warranty Included)
Software : RTR-500W for Windows	
Compatible Devices	Remote Units: RTR-501 / 502 / 503 / 507 / 574 / 576 / 505-TC / 505-Pt / 505-V / 505-mA / 505-P (Including L Type and H Type), RTR-601-110 / 130 / E10 / E30 (RTR-601 Series is available for US only.) Repeater: RTR-500
Compatible OS (*2)	Microsoft Windows 10 32 / 64 bit Microsoft Windows 8 32 / 64 bit Microsoft Windows 7 32 / 64 bit Microsoft Windows Vista 32 bit (SP1 or later)
Display Languages (*3)	US : English, Spanish, Portuguese EU : English, Spanish, French, German, Italian

*1: For RTR-574 and RTR-576, registration of one unit will be counted as two units.

*2: For installation, it is necessary to have Administrator (Computer Administrator) rights.

*3: We recommend using an operating system in the same language as the display language. Operation in different languages is not guaranteed.
The specifications listed above are subject to change without notice.