

UTRIX-16 USB PDF TEMPERATURE RECORDER

Quick Start Guide

LogTag Recorders

Introduction

LogTag's UTRIX-16 is a fully configurable, multi-use USB temperature recorder that can create temperature reports without the need to install proprietary software or hardware at the destination. It can be plugged straight into a computer's USB port and generates a PDF file, which can be accessed using PDF software such as Acrobat Reader.

Hardware Requirements

- LogTag® UTRIX-16 USB PDF temperature recorder. It is recommended you connect all UTRIX-16 devices via a permanently plugged in USB extension cable or a USB hub to protect your computer's USB socket.
- A computer running Windows XP, Mac OSX or Linux.
- For configuration - a PC running Windows XP SP3 or later.



Software Requirements

Software requirements vary depending on the type of file you want the UTRIX-16 to generate when plugged into USB at the destination.

- If you wish to **configure** UTRIX-16 products you will need to download the LogTag® Analyzer software from LogTag's web site at <http://www.logtagrecorders.com/software.php>. Follow the instruction to install and start the software.

- If you only plan on **evaluating data**, plug the UTRIX-16 into a computer's USB socket. A PDF file will be generated¹, which you can open by accessing the recorder's USB memory storage with PDF reader software such as Acrobat Reader.
- At the same time an LTD file will be created¹ that can be **opened** with LogTag Analyzer. Here you can analyze data in detail, generate report files and create charts from multiple recorders for comparison.
- You can also choose to create a CSV file, which can be opened directly with MS Excel™.
- You can also **download** data directly into LogTag Analyzer without accessing the recorder's USB memory storage.

Configuring the UTRIX-16

UTRIX-16 products can be ordered ready to start, or configured using LogTag Analyzer.

- Start the LogTag Analyzer software, remove the protective cap and insert the UTRIX-16 into a USB port. You will receive a message that a new USB device has been found², and a generic driver will be installed.
- Once the driver is installed and the UTRIX-16 is ready (indicated by the green LED on the recorder blinking every second), it can receive configuration data. If the UTRIX-16 does not appear in the list of devices simply click **Again**. Click **Next** to proceed to the configuration screen.

Standard Configuration Options

The standard configuration options are almost identical to those of standard LogTag® recorder products and include settings such as **User ID, start method, pre-start recording, logging interval and duration, start delay, temperature alert parameters and password.**

Advanced Configuration Options

Click **Advanced Options** for additional configuration options.

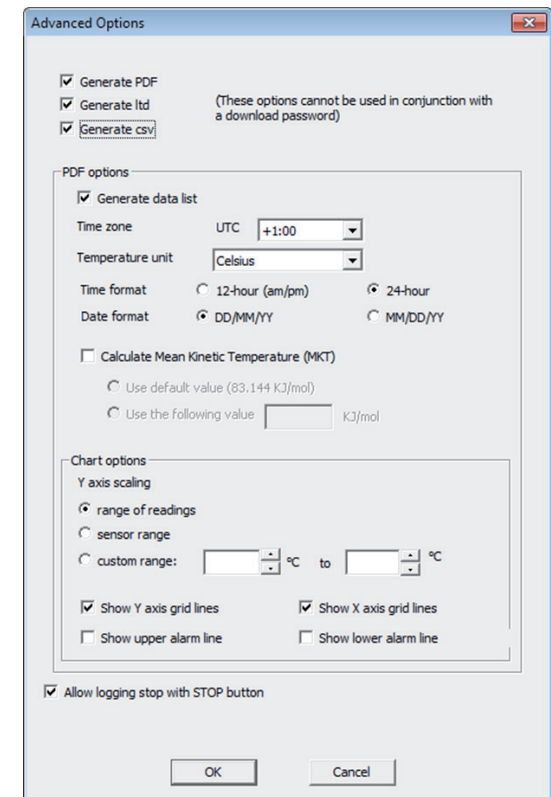
These options decide which files -if any- are generated at the end of the trip, whether or not the recorder can be stopped using the **STOP** button and also determine the appearance of the PDF file.

Parameters that influence the appearance of the PDF file are

- creation of the data list
- setting of the temperature unit, date and time format
- Time Zone and MKT settings
- setting scaling parameters for the chart

¹ Depending on the configuration, the UTRIX-16 may produce a combination of different file types, or none at all if file generation is disabled when configuring the unit.

² Depending on the factory configuration additional drivers may be installed at this time.



Enter the desired options and click **Close** to accept the new values. This returns you to the standard configuration dialogue.

Finalising the configuration

- Click **Next** and the recorder will be configured with these settings.
- When the configuration is complete, unplug the UTRIX-16 from the USB socket and replace the protective cap.
- If you wish to configure more UTRIX-16 units with the same configuration profile, insert the next recorder into the USB socket, wait until it is ready for configuration and click **Again**.
- You can also configure multiple units at the same time.

Starting the UTRIX-16

During configuration you can decide when the UTRIX-16 recorder should start taking temperature readings:

- ... via **Push button start**
The recorder starts taking temperature readings immediately after you press the **START/Mark** button.
- ... via **Push button start** with **pre-start logging enabled**
The UTRIX-16 starts recording pre-start readings as soon as it is unplugged from the USB port until you start the unit by pressing the **START/Mark** button. The pre-start readings will not be shown on the PDF.
- ... with a **Start Delay**
The recorder starts taking readings, once a defined period has passed after you press the **START/Mark** button.
- ... via **Date/Time start**
The recorder will start taking temperature readings at the specific date and time (local time).

While recording...

While the UTRIX-16 is recording the green LED blinks every 4 seconds if none of the configured alarm conditions have been met. As soon as one of the alarm conditions is met, the red alert LED blinks every 4 seconds.

Marking a reading with an inspection mark

When you press the **START/Mark** button, the next reading taken by the UTRIX-16 will be identified in the downloaded data with an inspection mark.

Stopping the Recorder

The UTRIX-16 stops recording temperature automatically when the maximum number of readings specified during configuration has been reached.

You can also enable stopping the UTRIX-16 with the **STOP** button during configuration.

- Press and hold the **STOP** button. For the next 4 seconds both LED's will blink simultaneously.
- When the LED's start blinking more rapidly release the button. The recorder will now stop taking readings and cannot be re-started.

Evaluating the Data

Plug the UTRIX-16 into your computer's USB port. As part of the process up to four drivers will be installed, depending on the USRIC-8's configuration.

Signal	Sequence	Occurrence
Wake-up signal	Sequence of four quick alternate flashes of green-red LED's	<ul style="list-style-type: none"> displayed after configuration has been successfully applied to the UTRIX-16. Not to be mixed up with...
Start signal	Sequence of ten alternate flashes of green-red LED's	<ul style="list-style-type: none"> displayed when the UTRIX-16 starts its recording cycle. The delay timer is re-started (followed by Delay Signal).
Mark signal Delay Signal	Sequence of five simultaneous flashes of green and red LED's	<ul style="list-style-type: none"> displayed when pressing START/Mark button while recording to indicate an inspection mark. displayed directly after the start-up signal following a push button start where a recording delay has been configured. In this instance the start-up signal is repeated when the actual recording begins.
Logging active, no alert present	Single flash of green LED every 4 seconds (approx.)	<ul style="list-style-type: none"> indicates UTRIX-16 is recording. This is not displayed when pre-start is active and the main logging cycle has not yet started. It is also not displayed when the green LED has been turned off in the configuration screen.
Logging finished, no alert present	Single flash of green LED every 8 seconds (approx.)	<ul style="list-style-type: none"> indicates UTRIX-16 has finished recording. This is not displayed when the green LED has been turned off in the configuration screen.
Logging active, alert condition present	Single flash of red LED every 4 seconds	<ul style="list-style-type: none"> indicates UTRIX-16 is recording, an alert condition has occurred. not displayed when pre-start recording has been configured and the recorder has not yet been started.
Logging finished, alert condition present	Single flash of red LED every 8 seconds	<ul style="list-style-type: none"> indicates UTRIX-16 has finished recording and an alert condition was present during the trip.
Communication	The green LED will flash occasionally	<ul style="list-style-type: none"> during USB communication the green LED will flash occasionally; no information is conveyed in this.
Initiate Stop	Sequence of simultaneous flashes of green and red LED's for 4 seconds	<ul style="list-style-type: none"> This LED sequence appears when the stop sequence is initiated and requires that the STOP button is enabled.
Stopping	Sequence of very quick simultaneous flashes of green and red LED's for 2 seconds	<ul style="list-style-type: none"> When this LED sequence starts, the STOP button must be released for the recorder to stop.
Ready for USB	Two quick flashes of the green LED every second	<ul style="list-style-type: none"> The UTRIX-16 is connected to a USB port and waiting for USB communication.
Ready for re-flash	The red LED is on permanently	<ul style="list-style-type: none"> The UTRIX-16 is ready to receive new firmware. Special software is required to load firmware to the UTRIX-16.
Generating PDF	The green LED is on permanently	<ul style="list-style-type: none"> The UTRIX-16 is generating a PDF. No USB activity will be observed on the computer screen during this time.

Light sequences on the UTRIX-16 and what they mean

While a UTRIX-16 is plugged into USB, no temperature readings are taken. The graph will display a gap and the data list will indicate "paused". This also applies when the recorder is connected to a USB power supply. Once complete, a new storage device or mounted device will appear. You can access the files by browsing to the newly created drive and double-clicking the PDF, CSV or LTD files. For PDF files you will require Adobe Acrobat Reader or a similar PDF viewer. CSV files can be opened with a text editor, or imported into a spreadsheet program such as MS Excel™. To open the LTD file you will need to install the free LogTag Analyzer software.

The files created by the UTRIX-16 are not automatically copied to a permanent storage volume on your computer. If you wish to retain the files you need to manually copy them to a location such as your **Documents** folder.

Getting Help

If after reading this guide you still need more information please refer to the [UTRIX-16 Product User Guide](#) or the [LogTag Analyzer User Guide](#), and also the support section on the LogTag Recorders website.