

CALIBRATABLE REPLACEABLE SMART PROBE



LogTag®

CP100
Smart Probe



The LogTag® CP100 is equipped with a precise and adjustable probe that can be swapped out and calibrated separately from the logger.

This probe can be inserted into a compatible logger without relocating or removing the logger because of its plug-and-play hot-swappable design. When the probe's calibration period ends, it can be replaced with a new probe, and the expired probe can be sent to a calibration lab for re-calibration. This ensures continuous logging without any interruptions.

Features



Plug-and-play hot-swappable calibratable probe without the need to take or remove the loggers from current locations.



Available in 1.5 Meter Cable Length.



Battery life of 5-year storage, 1-year of normal use (based on 5-minute logging).



Suitable for a wide range of applications

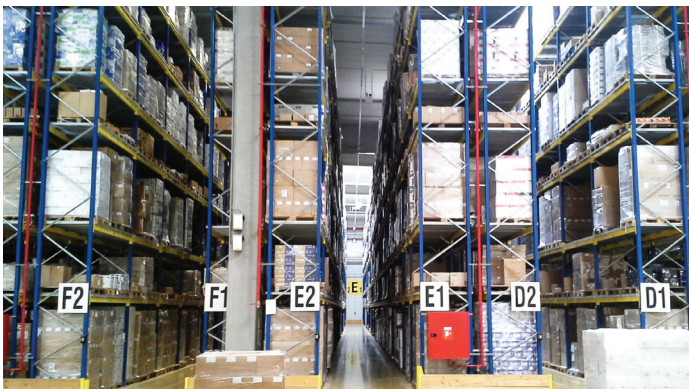
Applications



Laboratories



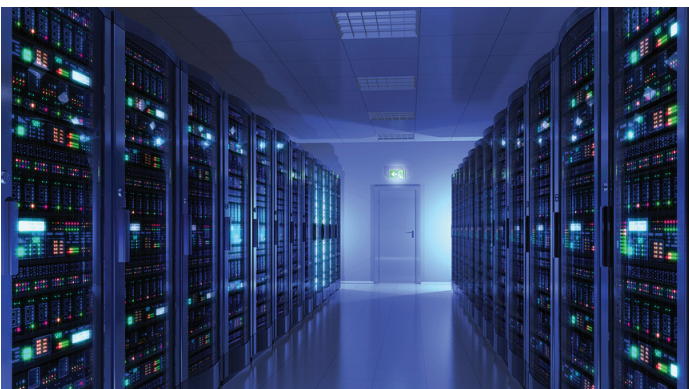
Pharmaceutical & Vaccine



Warehouse



Cold Room



Server Room



Clinics

Specifications

Product Model	CP100K-15
Temperature Measurement Range	-40 °C to +99 °C (-40 °F to +210 °F)
Temperature Operating Range, Probe End	-40 °C to +99 °C (-40 °F to +210 °F)
Temperature Operating Range, Signal Conditioning End	-20 °C to +70 °C (-4 °F to +158 °F)
Humidity Operating Range	0 %RH to 100 %RH (non-condensing)
Humidity Storage Range	20 %RH to 60 %RH
Rated Temperature Reading Accuracy	Better than ± 0.5 °C (± 0.9 °F) for -20 °C to +40 °C (-4 °F to +104 °F), typically ± 0.3 °C (0.6 °F) Better than ± 0.8 °C (± 1.4 °F) for -40 °C to -20 °C (-40 °F to -4 °F), typically ± 0.5 °C (0.9 °F) and for +40 °C to +70 °C (+104 °F to +158 °F), typically ± 0.7 °C (1.3 °F) Better than ± 1.2 °C (± 2.2 °F) for +70 °C to +99 °C (+158 °F to +210 °F), typically ± 1 °C (1.8 °F)
Temperature Resolution	0.1 °C (0.2 °F) for measurements -40 °C to +50 °C (-40 °F to +122 °F) 0.2 °C (0.4 °F) for measurements +50 °C to +70 °C (+122 °F to +158 °F) 0.3 °C (0.5 °F) for measurements +70 °C to +80 °C (+158 °F to +176 °F) 0.4 °C-0.6 °C (0.7 °F to 1 °F) for measurements +80 °C to +99 °C (+176 °F to +210 °F)
Acquisition Interval	Determined by logger, shortest acquisition interval 30 seconds
Sensor Reaction Time	Based on tip, same as for current probes
Indicators	None
Environmental	Probe tip: IP68 Probe tip/cable junction: IP64 Signal conditioning: IP44
Power Source	CR2032 3V LiMnO2 Battery (distributor-replaceable)
Battery Life	5-year storage, 1-year of normal use (based on 5-minute logging)
Connection Interface	1-wire digital interface to compatible loggers
Logger Compatibility	UTRED30-WIFI Dual-Channel Version 8.2 and later UTRED30-16 Dual-Channel Version 8.2 and later UTRED30-16 Single-Channel Version 8.2 and later
Weight	34g
Signal Conditioning Case Material	Polycarbonate
Tip Material	Stainless Steel 316
Cable Material	PTFE

